



AN IP CAMERA BASED  
**FACIAL RECOGNITION**  
**SYSTEM**

 **Guard**

A PRODUCT OF **AQSA TECHNOLOGIES**





## ***INTRODUCTION:***

---



### **FACE RECOGNITION TECHNOLOGY HAS WITNESSED A SIGNIFICANT IMPROVEMENT IN THE CHANGING WORLD.**

Real-time face recognition is used for recognizing faces of people to get multiple advantages like attendance, access control, security & surveillance, human identification in retail industry for multiple analysis visitor management and customized solution with face biometrics. It detects and recognizes faces precisely and quickly through IP Camera.

EZ Guard facial recognition system is designed to perform biometric face identification using live video streams from any IP surveillance cameras. This technology is also designed for CPU based machines in order to reduce hardware & infrastructure budget. The algorithm capacity is to process 40,000 faces per second on CPU and up to 1.2 Billion Comparisons per second on specialized GPU hardware. EZ Guard has embedded artificial intelligence (AI) to recognize face or object that already has been placed in the database and give output in seconds.

In Covid-19, it has been enforced in all organizations to adopt contactless biometrics especially attendance system to avoid virus spread by the Government Institutions Worldwide. It has now become a new normal for the industries where mass labor force work. Aqsa Technologies has conducted exhaustive research & development and concoct EZ Guard - Facial Recognition System to facilitate the commercial industry of the Pakistan.

In EZ Guard solution we further offer two types of licenses GPOS & GLIVE. GPOS recognizes one face at one time based on CPU technology. Whereas GLIVE recognizes multiple faces at one time based on GPU technology.

## EZGUARD TIME & ATTENDANCE MANAGEMENT SYSTEM TECHNICAL COMPARISON STUDY

Sr. No.	Description	EZGuard	Other Systems
1.	Special Hardware Dependency	No	Yes
2.	Hardware Replacement in case of any damage	Partial	Complete
3.	Software based Solution	Yes	No
4.	License Based	Yes	No
5.	License can be shifted to any hardware any time.	Yes	No
6.	Lifetime License Value	Yes	No
7.	Unlimited Users capacity	Yes	No
8.	Real Time Face Recognition and data base connectivity	0.16 sec	>=2 sec
9.	Real Time Integration with Company Centralized HR database	Yes	No
10.	Customizable Solution	Yes	No
11.	Face Detection Distance	7-10 feet	Less than 1 feet
12.	Night Vision Face Detection	Yes	No
13.	Wide Display with Employee/Attendance customized Information	Yes	No
14.	Processing Capacity	40,000 per sec	7,000 per 3 sec
15.	Access Control (Turnstile, door etc)	Yes	Yes
16.	Customized Android Application Supported	Yes	No
17.	Live Face Detection Facility	Yes	No
18.	Gender classification, age evaluation and emotion recognition facility	Yes	No
19.	Multiple face processing from still images for employee/face verification (EZGuard additional Feature)	Yes	No
20.	Integrated with other EZGuard Products EZGuard G-POS Access Control EZGuard G-POS Visitor Management EZGuard G-LIVE Security Surveillance EZGuard G-LIVE Retail Management	Yes	No





## **ATTENDANCE MANAGEMENT SYSTEM:**

A facial recognition time and attendance system provides the abolition of employee's human error. This means you can monitor and track your employees working hours more accurately. There can be no false claims of hours worked such as overtime with this money saving solution, instead of paying employees the false hours worked.

In recent times, it has been made obligatory for the organizations to implement contactless attendance management system to avoid corona virus spread. The industry is following a trend where personal monitoring for attendance is not required. Moreover, for organizations with a large volume of employees EZ Guard provides accurate results for as many as you want. The live integration of the system with other ERP or HRIS is quite easy and the information collected can be organized accordingly.

- Help find missing people and identify offenders
- Reduces the number of touchpoints
- Full proof biometric technology
- Employees attributes
- Turnstile Integration

## **ACCESS CONTROL:**

Face recognition access control provides employees with quick and convenient access to the workplace while preventing fraud. The EZ Guard software accuracy, search speed and low error rate make this algorithm the starting point when choosing biometric-based security systems.

- Checkpoints
- Perilous area control
- Blacklists

# CONSUMER ATTRIBUTES (RETAIL):

Facial biometrics is able to provide data about your customers: recognize gender and age, count unique visitors, and register visiting frequency. Linking individual customer profiles to a digital facial database opens up the best opportunities in personalized marketing. Retail industry can verify footfall of the customers in stores and identify their potential customer real time.



# VISITOR MANAGEMENT:

Recognize your regular visitors at the doorstep and use the information to make their visit as enjoyable and productive as possible. Collect anonymous statistics about your visitors to identify patterns of behavior among different groups at different times to generate effective personalized offers. EZ Guard will provide informative reports, and instant notifications of visitors or unwanted guests with convenient tracking.





## ***SECURITY & SURVEILLANCE:***

Instantly identify known threats, real time alerts, and identity authentication against watch list. The system protects crowded spaces, boundary walls, prevent crimes and secure sensitive locations. This system requires GPU card for processing.



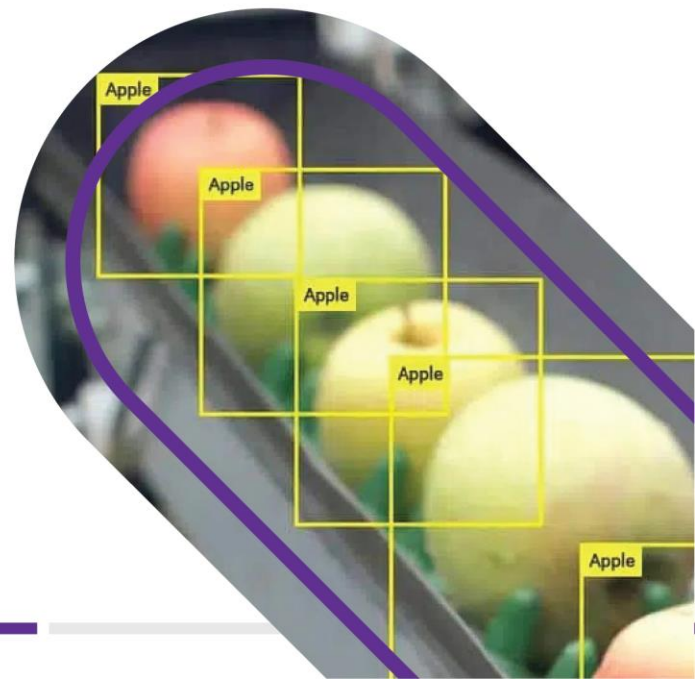
## ***ALPR (AUTOMATIC LICENSE PLATE RECOGNITION):***

Combined with a state-of-the-art parking management system, our ALPR system helps to manage traffic flow and parking on your premises. Should an employee or visitor need to move their car, ALPR backed with the license plate database makes it easier to identify the vehicle and the person it belongs to. Very easy to manage and grant access to employees, partners, visitors and delivery vehicles - to get in and out. This system requires GPU card for processing.



## ***PRODUCT/OBJECT MODELING & TRAINING:***

EZ Guard can also be used in production line for calculation of finished goods, scanning of damaged product, total weight etc. This is quite easy for manufacturing units now to automate production line inventory system through EZ Guard.



## OUR CLIENTS



### **MASTER TEXTILE MILLS LTD**

Managing Over 8,500 employees attendance through GPOS Attendance integrated with ORACLE HRMS DB.



### **YASIR AFZAL TEXTILE PVT. LTD**

Managing over 1,600 employees connected with turnstile integrates with EZCorporate ERP.



### **EASTERN HOUSING LAHORE**

Managing over 400 employees integrates with EZCorporate ERP.

**AND MANY MORE**

**TO COME...**







A PRODUCT OF **AQSA TECHNOLOGIES**

## Contact Us



042 35463666



+92 322 4094749  
+92 300 0442103



[sales@aqstatech.com](mailto:sales@aqstatech.com)  
[www.aqstatech.com](http://www.aqstatech.com)



**Lahore Office:** 131-Eden  
Centre, Jail Road, Lahore.

